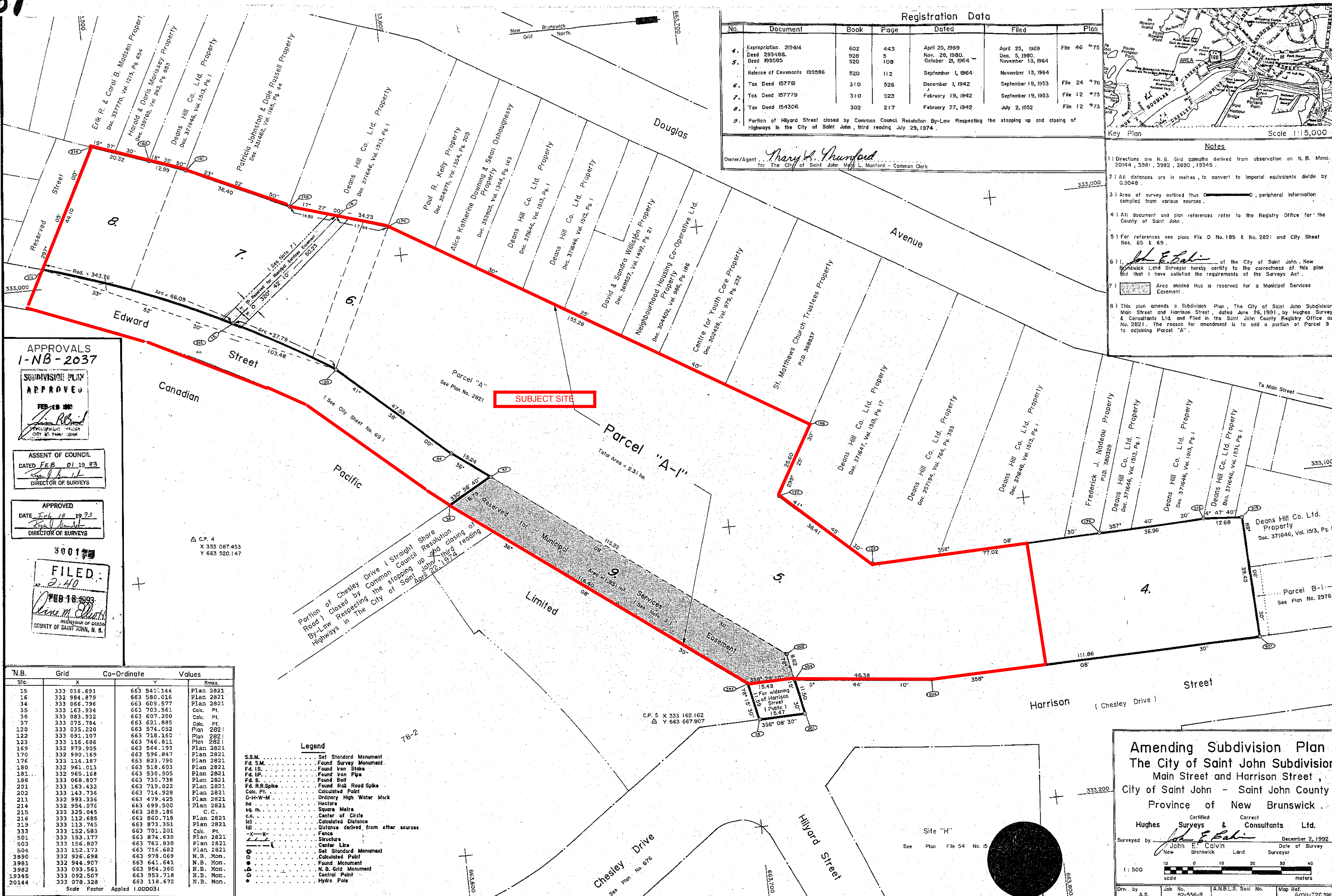
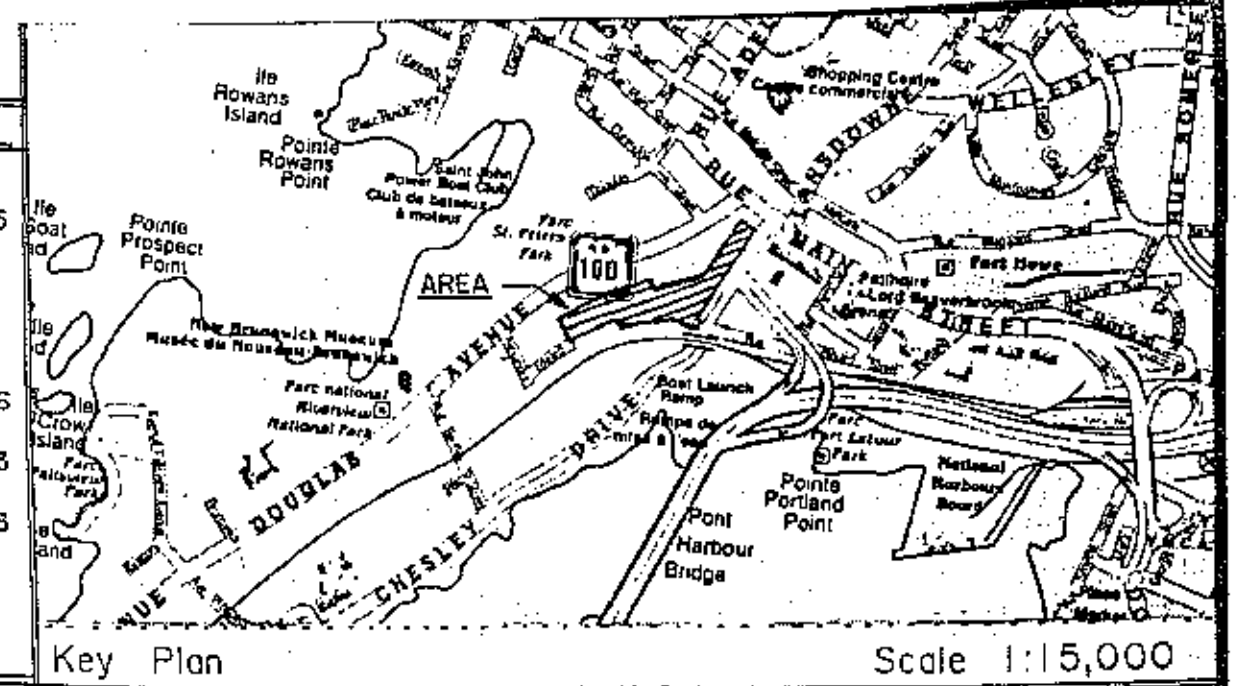


3001



Registration Data					
No.	Document	Book	Page	Dated	Filed
1.	Expropriation 219414	602	443	April 25, 1969	April 25, 1969
2.	Deed 293468	928	5	Nov. 28, 1980	Dec. 5, 1980
3.	Deed 199585	520	108	October 21, 1964	November 13, 1964
4.	Release of Covenants 199586	520	112	September 1, 1964	November 13, 1964
5.	Tax Deed 157781	310	526	December 1, 1942	September 19, 1953
6.	Tax Deed 157779	310	523	February 19, 1942	September 19, 1953
7.	Tax Deed 154306	302	217	February 27, 1942	July 2, 1952
8.	Partion of Hilyard Street closed by Common Council Resolution By-Law Respecting the stopping up and closing of Highways in the City of Saint John, third reading July 29, 1974.				File 12 473



Owner/Agent: *Mary S. Munford*
 for The City of Saint John
 L. Munford - Common Clerk

- Notes
- 1) Directions are N.B. Grid azimuths derived from observation on N.B. Mars. 20144, 3381, 3982, 3890, 19345.
 - 2) All distances are in metres, to convert to imperial equivalents divide by 0.3048.
 - 3) Area of survey outlined thus peripheral information compiled from various sources.
 - 4) All document and plan references refer to the Registry Office for the County of Saint John.
 - 5) For references see plans File D No. 185 & No. 2821 and City Sheet Nos. 65 & 69.
 - 6) *John E. Calvin* of the City of Saint John, New Brunswick Land Surveyor hereby certify to the correctness of this plan and that I have satisfied the requirements of the Surveys Act.
 - 7) Area shaded thus is reserved for a Municipal Services Easement.
 - 8) This plan amends a Subdivision Plan, The City of Saint John Subdivision, Main Street and Harrison Street, dated June 26, 1991, by Hughes Surveys & Consultants Ltd. and filed in the Saint John County Registry Office as No. 2821. The reason for amendment is to add a portion of Parcel 9 to adjoining Parcel "A".

APPROVALS
1-NB-2037

SUBDIVISION PLAN
APPROVED
 FEB 18 1993
John E. Calvin
 DEVELOPMENT OFFICER
 CITY OF SAINT JOHN

ASSENT OF COUNCIL
 DATED FEB 01 19 93
John E. Calvin
 DIRECTOR OF SURVEYS

APPROVED
 DATE Feb 18 19 93
John E. Calvin
 DIRECTOR OF SURVEYS

FILED
 FEB 18 1993
John E. Calvin
 REGISTRAR OF DEEDS
 COUNTY OF SAINT JOHN, N. S.

N.B. Grid	Co-Ordinate	Values	Rmks.
Sta.	X	Y	
15	333 016.691	663 541.144	Plan 2821
16	332 984.879	663 580.016	Plan 2821
34	333 066.796	663 609.577	Plan 2821
35	333 163.934	663 703.561	Calc. Pt.
36	333 083.932	663 607.200	Calc. Pt.
37	333 075.784	663 621.885	Calc. Pt.
120	333 035.220	663 574.052	Plan 2821
122	333 091.107	663 718.160	Plan 2821
123	333 116.686	663 746.811	Plan 2821
169	332 979.905	663 564.193	Plan 2821
170	332 990.169	663 596.847	Plan 2821
176	333 114.187	663 822.790	Plan 2821
180	332 961.013	663 518.603	Plan 2821
181	332 965.168	663 530.905	Plan 2821
186	333 068.807	663 730.738	Plan 2821
201	333 163.432	663 719.022	Plan 2821
202	333 143.736	663 714.928	Plan 2821
211	332 993.336	663 479.425	Plan 2821
214	332 954.076	663 499.500	Plan 2821
215	333 325.045	663 389.186	C.C.
216	333 112.685	663 860.718	Plan 2821
219	333 113.745	663 873.351	Plan 2821
333	333 152.583	663 701.201	Calc. Pt.
501	333 153.177	663 874.630	Plan 2821
503	333 156.807	663 762.830	Plan 2821
504	332 152.172	663 716.682	Plan 2821
3890	332 926.698	663 978.069	N.B. Mon.
3981	332 944.907	663 641.641	N.B. Mon.
3982	333 093.561	663 954.360	N.B. Mon.
19345	333 092.507	663 953.718	N.B. Mon.
20144	333 078.328	663 118.672	N.B. Mon.

Scale Factor Applied 1.000031

- Legend**
- S.S.M. Set Standard Monument
 - Fd. S.M. Found Survey Monument
 - Fd. IS. Found Iron Stake
 - Fd. IP. Found Iron Pipe
 - Fd. B. Found Bolt
 - Fd. R.R. Spike Found Rail Road Spike
 - Calculated Point Calculated Point
 - O-H-W-M Ordinary High Water Mark
 - ha Hectare
 - sq. m. Square Metre
 - c.c. Center of Circle
 - (cl) Calculated Distance
 - (dl) Distance derived from other sources
 - X-X- Fence
 - Structure
 - Center Line
 - Set Standard Monument
 - Calculated Point
 - Found Monument
 - △ N.B. Grid Monument
 - △ Control Point
 - Hydro Pole

Amending Subdivision Plan
The City of Saint John Subdivision
Main Street and Harrison Street,
City of Saint John - Saint John County,
Province of New Brunswick.

Certified Correct
 Hughes Surveys & Consultants Ltd.

Surveyed by *John E. Calvin* December 2, 1992
 New Brunswick Land Surveyor

1:500 scale

Drn. by A.S. Job No. 92-556-R A.N.B.L.S. Seal No. Map Ref. 6701-T2C,SW(II)