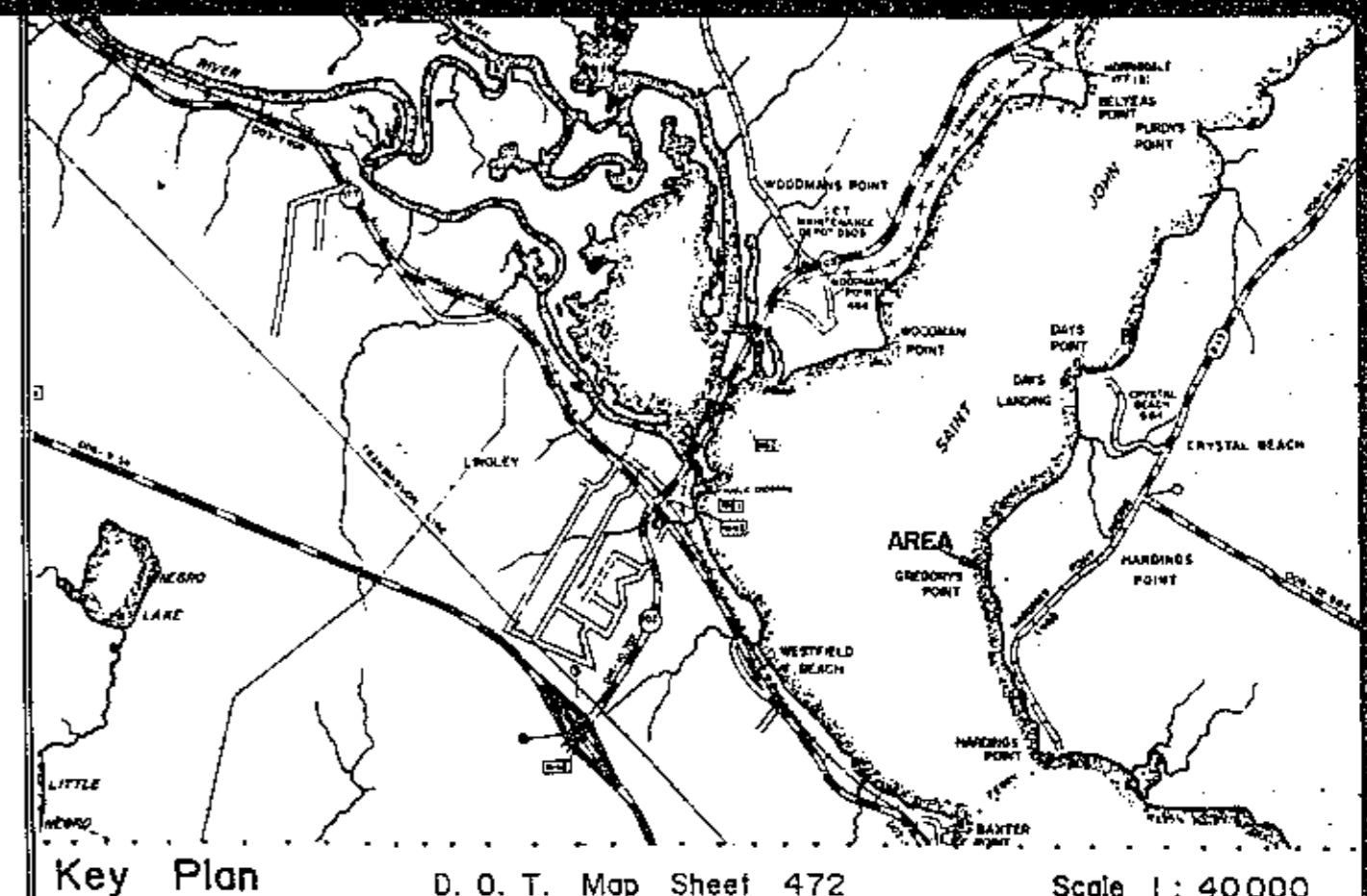
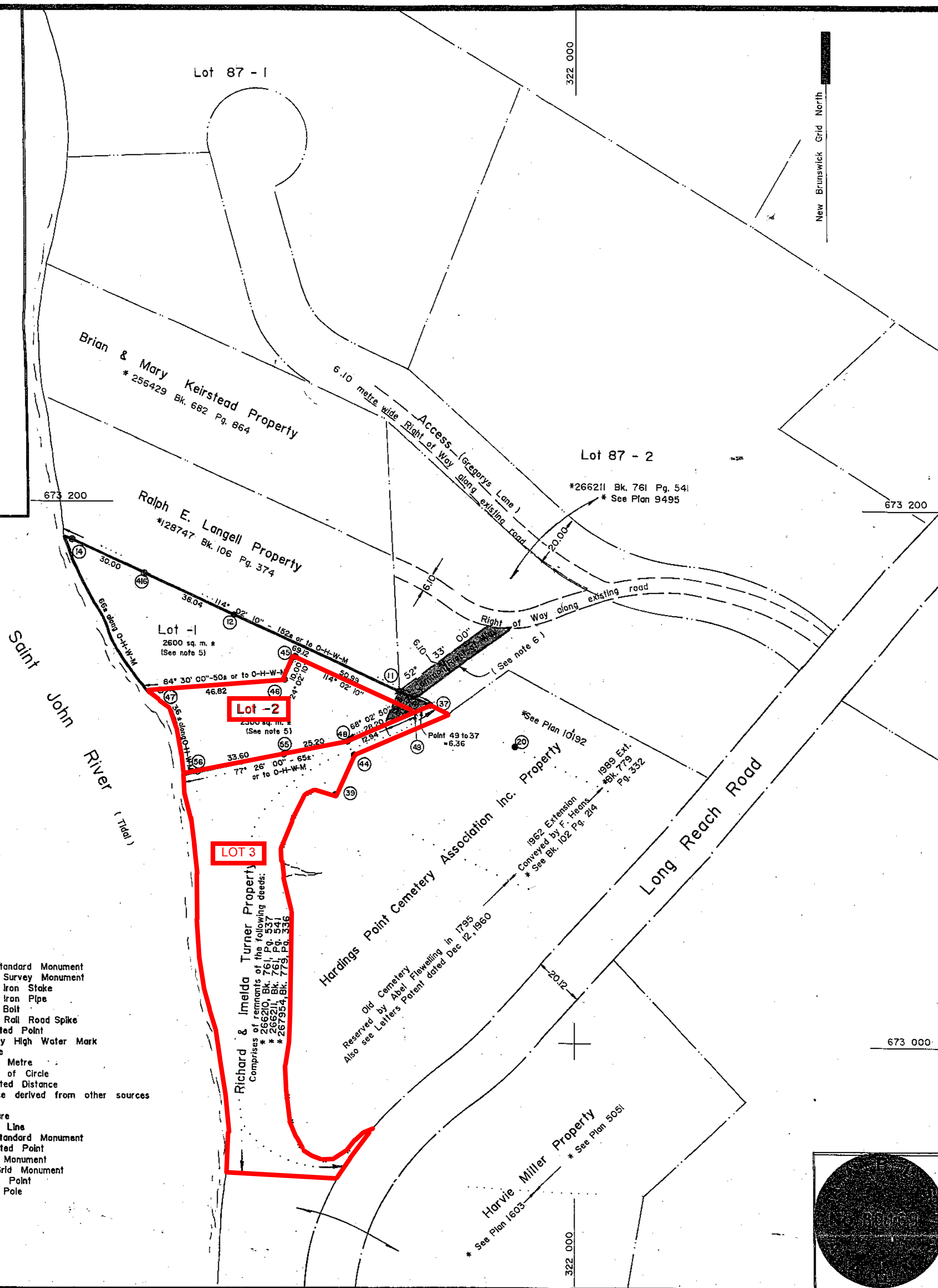


EXEMPTED APPROVED
 For Development Officer
 Province of New Brunswick
 1995 AUG 1
 Date

20064
 Filed
 31st day of
 Nov A.D. 1996
 Hour 3:50 P.M.
 Kings Co., N. B.
 [Signature]



Registration Data

Doc.* 266209 Bk. 761 Pg. 533 Reg. August 11, 1989	Doc.* 266210 Bk. 761 Pg. 537 Reg. August 11, 1989	Doc.* 266211 Bk. 761 Pg. 541 Reg. August 11, 1989	Doc.* 267954 Bk. 779 Pg. 336 Reg. October 18, 1989
Doc.* 307970 Bk. 1151 Pg. 579 Reg. Oct. 7, 1994.	Owner/Agent for Canterbury Developments Ltd		Doc.* 307971 Bk. 1151 Pg. 585 Reg. Oct. 7, 1994.

- Notes
- 1) Directions are N. B. Grid azimuths derived from observation on N. B. Mon's. 5122, 5123, 21207 & 21208
 - 2) All distances are in metres, to convert to imperial equivalents divide by 0.3048.
 - 3) Area of survey outlined thus , peripheral information compiled from various sources.
 - 4) * All document and plan references refer to the Registry Office for the County of
 - 5) The purpose of this plan is to adjust the boundaries of various existing lots thus creating a more functional lot layout to accommodate the future installation of wells and septic tanks.
 - 6) Shaded area shown thus denotes Common Right of Way from lots 1 and 2 to Right of Way along existing road.

Adjusted New Brunswick Grid Co-ordinate Values

Station	Eastings	Northing	Remarks
11	321 932.386	673 129.878	Fd. I.P.
12	321 869.259	673 158.031	Fd. I.S.
14	321 807.119	673 185.744	S.S.M.
20	321 976.785	673 110.078	Fd. I.S.
37	321 944.633	673 124.416	S.S.M.
39	321 908.026	673 090.682	Fd. S.M.
44	321 914.828	673 105.934	Fd. S.M.
45	321 892.165	673 142.809	S.S.M.
46	321 888.092	673 133.676	S.S.M.
47	321 841.489	673 129.189	S.S.M.
48	321 912.585	673 111.498	S.S.M.
49	321 938.736	673 122.039	Cal. Pt.
55	321 887.992	673 106.017	S.S.M.
56	321 855.197	673 098.707	S.S.M.
416	321 834.518	673 173.525	S.S.M.
5122	320 805.459	672 647.536	N.B. Mon
5123	320 607.826	674 067.926	N.B. Mon
21207	322 526.115	673 591.525	N.B. Mon
21208	322 688.363	673 900.018	N.B. Mon

Scale factor applied 1.000011

- Legend
- S.S.M. Set Standard Monument
 - Fd. S.M. Found Survey Monument
 - Fd. I.S. Found Iron Stake
 - Fd. I.P. Found Iron Pipe
 - Fd. B. Found Bolt
 - Fd. R.R. Spike Found Roll Road Spike
 - Calc. Pt. Calculated Point
 - O-H-W-M Ordinary High Water Mark
 - ha Hectare
 - sq. m. Square Metre
 - c.c. Center of Circle
 - (c) Calculated Distance
 - (d) Distance derived from other sources
 - X-X- Fence
 - Structure
 - Center Line
 - Set Standard Monument
 - Calculated Point
 - Found Monument
 - N. B. Grid Monument
 - Control Point
 - Hydro Pole

SUBDIVISION PLAN
 Gregorys Point Subdivision,
 (Lot line adjustments)
 Parish of Westfield,
 Kings County, New Brunswick.

Certified Correct
Hughes Surveys & Consultants Ltd.

Surveyed by R. Leeman Oct 17, 1994
 Date of Survey
 New Brunswick Land Surveyor
 R. L. Leeman
 Scale 1:1000
 0 20 40 60 80 metres

Dwn. by Job No. 89-408-A.N.B.L.S. Seal No. Map Ref. G/08-V2C