

13572749

Registration Data

| Grantor   | Grantee                | Doc.   | Vol. | Pg. | Reg. Date      |
|---|------------------------|--------|------|-----|----------------|
| The Royal Trust Corporation Of Canada (executor of the Estate of A. Leonard Turner) | The City Of Saint John | 294640 | 933  | 683 | Mar. 4, 1981   |
| Richard and Jean MacDonald  | The City Of Saint John | 289398 | 908  | 19  | May 1, 1980    |
| Gordon and Rita E. Wilkie   | The City Of Saint John | 289671 | 909  | 200 | May 15, 1980   |
| Eida Berry  | The City Of Saint John | 289287 | 907  | 353 | Apr. 25, 1980  |
| Frank O. and Margaret M. Doiron   | The City Of Saint John | 291803 | 919  | 619 | Sept. 17, 1980 |
| Theodore A. and Winnie S. Sabeau  | The City Of Saint John | 290904 | 915  | 134 | July 31, 1980  |
| Dorothy G. Breen  | The City Of Saint John | 293088 | 926  | 7   | Nov. 17, 1980  |
| Alonzo G. and Pauline Thibodeau   | The City Of Saint John | 292976 | 925  | 407 | Nov. 10, 1980  |
| Blanche Kashetsky   | The City Of Saint John | 293182 | 926  | 424 | Nov. 24, 1980  |
| Irving Oil Company Limited  | The City Of Saint John | 297147 | 947  | 673 | July 28, 1981  |

*Mary L. Munford*  
for The City Of Saint John - Mary L. Munford - Common Clerk

Notes

- 8) *Russell J. Robinson* of the City of Saint John, New Brunswick Land Surveyor, hereby certify to the correctness of this plan and that I have satisfied the requirements of the Surveys Act.
- 9) Parcels "A" and "B" are to be used in conjunction with future development, and are not building lots.

| SNB     | SNE        |
|---------|------------|
| R 25965 | R 31146    |
| R 25973 | R 55017080 |
| R 25981 | R 55049349 |
| R 25999 | R 55049327 |
| R 26005 | R 55157705 |
| R 26013 | R 55157713 |
| R 26062 | R 55157721 |

1-N.B.-2850

**SUBDIVISION PLAN APPROVED**

JAN 21 2002

DEVELOPMENT OFFICER  
CITY OF SAINT JOHN

ASSENT OF COUNCIL  
DATED 2001 NOV 19

DIRECTOR OF SURVEYS

APPROVED

DATE 2002 JAN 21

DIRECTOR OF SURVEYS

13572749  
JAN 22 2002  
9:18

13572749  
JAN 22 2002  
9:18

13572749  
JAN 22 2002  
9:18

13572749  
JAN 22 2002  
9:18

13572749  
JAN 22 2002  
9:18

13572749  
JAN 22 2002  
9:18

13572749  
JAN 22 2002  
9:18

13572749  
JAN 22 2002  
9:18

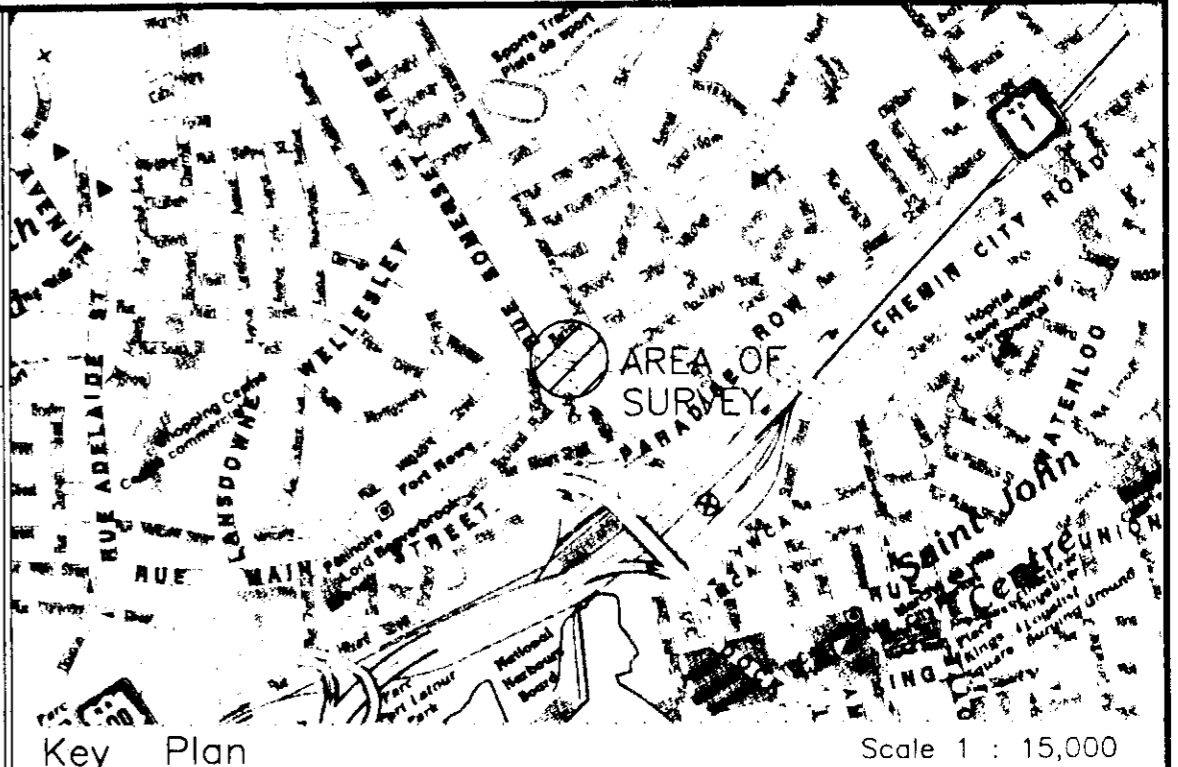
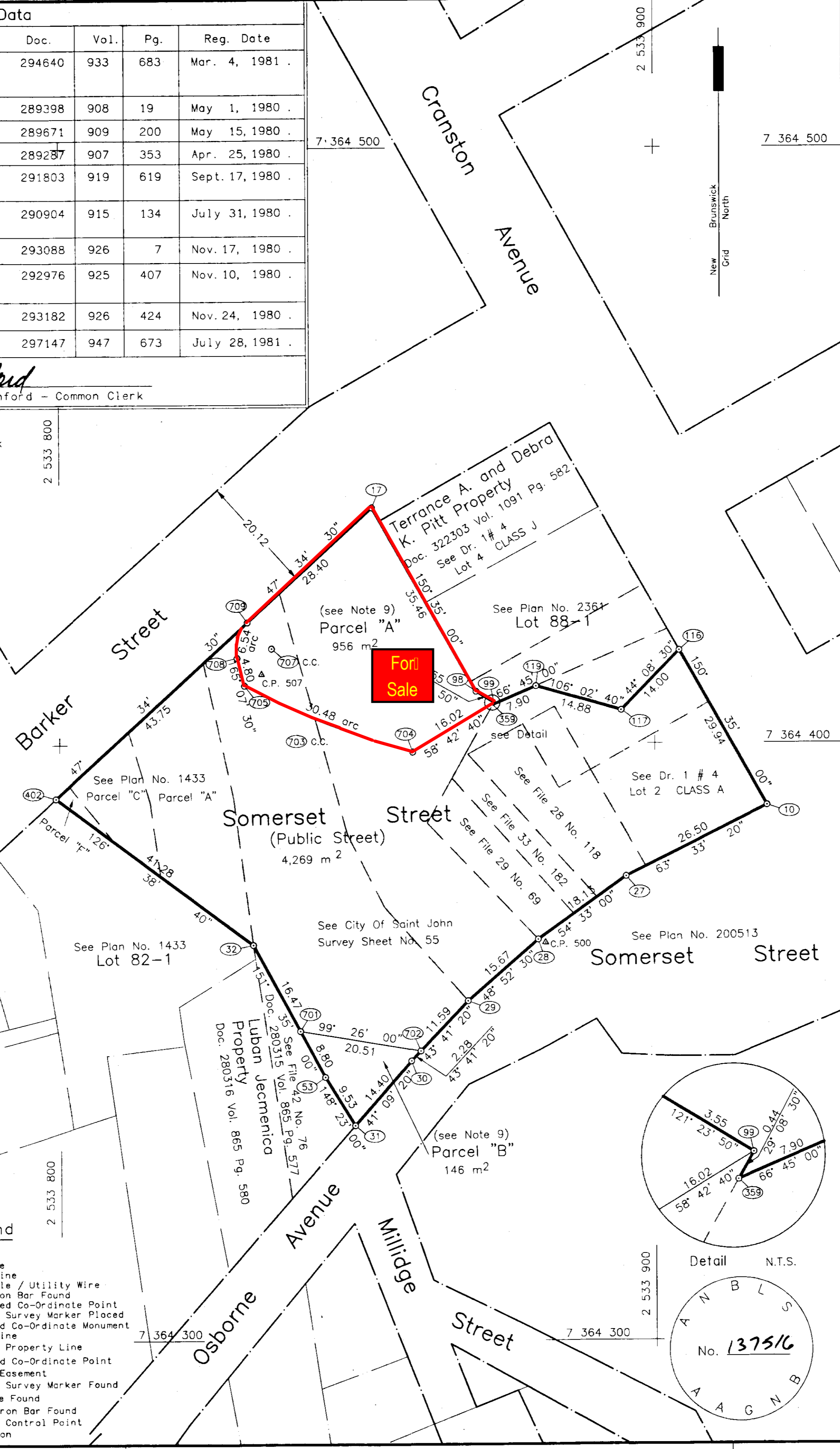
13572749  
JAN 22 2002  
9:18

13572749  
JAN 22 2002  
9:18

Kitchener Street

Legend

- Fence
- Structure
- Centre Line
- Hydro Pole / Utility Wire
- Round Iron Bar Found
- Calculated Co-Ordinate Point
- Standard Survey Marker Placed
- N.B. Grid Co-Ordinate Monument
- Street Line
- Adjacent Property Line
- Tabulated Co-Ordinate Point
- Utility Easement
- Standard Survey Marker Found
- Iron Pipe Found
- Square Iron Bar Found
- Traverse Control Point
- Foundation



- Notes
- 1) Directions are N. B. Grid azimuths derived from observations on N. B. Mon's. 1959, 3817, 3844, 3848, 3849, 3984 and 19328 (NAD83 CSRS Adjusted Values)
  - 2) Co-Ordinates for Control Points 500, 507 and 509 are derived from GPS observations on N.B. Mon's. 1959 and 3800.
  - 3) All distances are in metres, to convert to imperial equivalents divide by 0.3048.
  - 4) Area of survey outlined thus , peripheral information compiled from various sources.
  - 5) All document and plan references refer to Registry Office for Saint John.
  - 6) Field survey completed on Nov. 2, 2001.
  - 7) All computations performed and coordinates shown on this plan are based on New Brunswick Stereographic Double Projection and the NAD83(CSRS) Ellipsoid as realized by Service New Brunswick Adjusted coordinate survey monuments.

Curve Data

| Curve   | Radius | Chord | Chord Az.    | C.C. |
|---------|--------|-------|--------------|------|
| 708-709 | 6.00   | 6.22  | 16° 21' 00"  | 707  |
| 705-704 | 127.90 | 30.41 | 111° 47' 50" | 703  |

New Brunswick Grid Co-Ordinate Values

| Sta.  | X             | Y             | Rmks.           |
|-------|---------------|---------------|-----------------|
| 10    | 2 533 918.813 | 7 364 389.541 | Plan 200513     |
| 17    | 2 533 852.573 | 7 364 439.688 | CALC. PT.       |
| 27    | 2 533 895.085 | 7 364 377.739 | Plan 200513     |
| 28    | 2 533 880.316 | 7 364 367.224 | Plan 200513     |
| 29    | 2 533 868.512 | 7 364 356.918 | CALC. PT.       |
| 30    | 2 533 858.933 | 7 364 346.890 | CALC. PT.       |
| 31    | 2 533 849.456 | 7 364 336.048 | CALC. PT.       |
| 32    | 2 533 832.437 | 7 364 366.383 | Plan 1433       |
| 53    | 2 533 844.462 | 7 364 344.160 | CALC. PT.       |
| 98    | 2 533 869.989 | 7 364 408.801 | CALC. PT.       |
| 99    | 2 533 873.020 | 7 364 406.951 | CALC. PT.       |
| 116   | 2 533 904.108 | 7 364 415.621 | Plan 2361       |
| 117   | 2 533 894.358 | 7 364 405.575 | Plan 2361       |
| 119   | 2 533 880.062 | 7 364 409.686 | Plan 2361       |
| 359   | 2 533 872.806 | 7 364 406.568 | Plan 2361       |
| 402   | 2 533 799.318 | 7 364 391.019 | Plan 1433       |
| 500   | 2 533 881.546 | 7 364 366.677 | CP              |
| 507   | 2 533 833.981 | 7 364 411.772 | CP              |
| 509   | 2 533 748.864 | 7 364 480.284 | CP              |
| 701   | 2 533 840.276 | 7 364 351.897 | CALC. PT.       |
| 702   | 2 533 860.505 | 7 364 348.536 | CALC. PT.       |
| 703   | 2 533 892.369 | 7 364 322.190 | C.C.            |
| 704   | 2 533 859.330 | 7 364 398.631 | CALC. PT.       |
| 705   | 2 533 831.092 | 7 364 409.924 | CALC. PT.       |
| 707   | 2 533 835.659 | 7 364 416.103 | C.C.            |
| 708   | 2 533 829.860 | 7 364 414.562 | CALC. PT.       |
| 709   | 2 533 831.611 | 7 364 420.532 | CALC. PT.       |
| 1959  | 2 533 580.919 | 7 364 165.272 | N.B. Mon. (Adj) |
| 3817  | 2 533 964.044 | 7 364 335.189 | N.B. Mon. (Adj) |
| 3844  | 2 534 717.786 | 7 364 483.322 | N.B. Mon. (Adj) |
| 3848  | 2 533 721.213 | 7 364 745.872 | N.B. Mon. (Adj) |
| 3849  | 2 533 559.439 | 7 365 072.749 | N.B. Mon. (Adj) |
| 3984  | 2 533 134.959 | 7 363 390.179 | N.B. Mon. (Adj) |
| 19328 | 2 534 071.095 | 7 363 939.111 | N.B. Mon. (Adj) |

Scale Factor applied 1.000034

**Subdivision Plan**  
The City Of Saint John Subdivision,  
Somerset Street, City of Saint John,  
Saint John County, New Brunswick.

HUGHES SURVEYS & CONSULTANTS LTD.  
Surveyed by *Russell J. Robinson* Dec. 3, 2001  
New Brunswick  
1:500

|                 |                  |              |                         |
|-----------------|------------------|--------------|-------------------------|
| Dwg. No. S01224 | Disk No. 2001    | Topos S01224 | Disk No. 2001           |
| Dwn. by B.S.M.  | Job No. Y1-224-R | Rev. No.     | Map Ref. G/08-T2C,SW(4) |